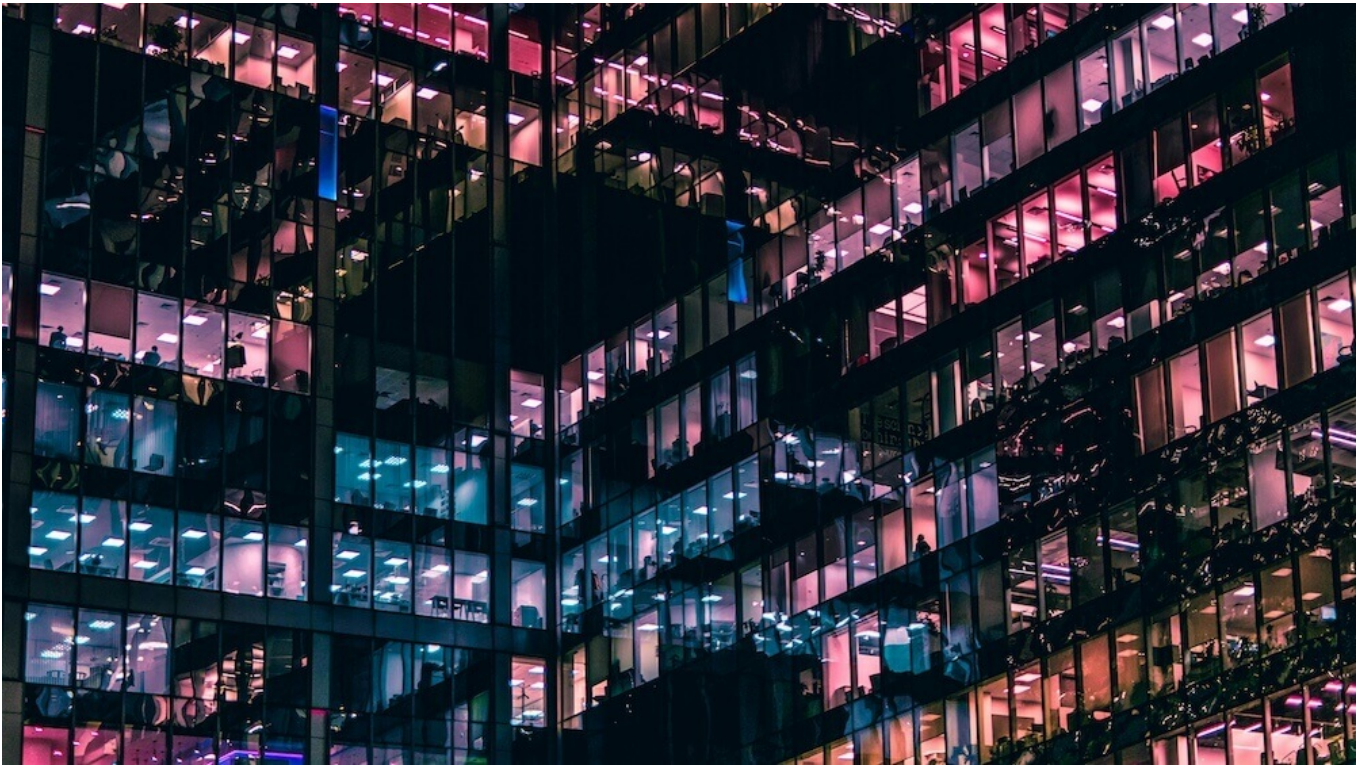


Roji Health Intelligence Response to CMS RFI for Health Technology Ecosystem

written by Theresa Hush | June 26, 2025



Data and technology, once simply functional assets to facilitate health care, are now a leading force for health care advancement, improvement of health care outcomes, and control of costs. Yet the panoply of technologies has not optimized information for one key actor: the patient. The Center for Medicare and Medicaid Services (CMS) is attempting to correct that problem. Its [Request for Information \(RFI\) released on May 16, 2025](#) attempts to solicit a “reset” of how the informational flow between systems will work to improve the patient health status and patients’ ability to make decisions. The RFI also addresses flow of data for providers to improve outcomes and delay progression of disease, and to ease the burden associated with reporting quality of care for patients.

Systems in the ecosystem include more than EHRs. Data stored in technology and analytics company applications and used by providers for clinical advancement, quality reporting, providers’ business needs, and patient support are covered by the RFI.

Roji Health Intelligence has responded to the RFI in the public comment period. At the heart of our response is the goal of true and accurate information for patient and clinical decision-making, and where patients should get such information. [You can read our comments here](#)

[PDF download].

Founded in 2002, Roji Health Intelligence guides health care systems, providers and patients on the path to better health through Solutions that help providers improve their value and succeed in Risk.

Image: Mike Kononov